



Do MORE
with Less!
Systemise to
excel with
jEylabs

BUSINESS
TECHNOLOGY
CONSULTANTS

Remove
PAIN from
work

jeylabs

PowerToolz Fast Start Tutorial

What you will need:

Required:

If you do not have with PowerToolz installed, the install file is required to use for the installation guide portion of this tutorial. If you have already installed PowerToolz you will require access to the workstation with access to a K2 environment and has PowerToolz installed. Alternatively, PowerToolz can be installed onto the server that hosts the K2 environment you wish to access using PowerToolz. If this method is chosen, then access to the server will be required to complete this tutorial.

Not essential but helpful to have:

This guide has been written to compliment PowerToolz 5.2. It is recommended that this version is used when completing this tutorial to ensure that all features and screen captures are relevant.

Tutorial Contents:

1. Installing PowerToolz
2. Connecting to a K2 environment
3. Understand a K2 environment through exploration with PowerToolz
4. Create your first test scripts
 - 4.1. Create a SmartObject test script
 - 4.2. Create a SmartForm test script
 - 4.3. Create a Process test script
5. Execute tests and verify results
 - 5.1. Execute SmartObjects test and results
 - 5.2. Execute SmartForms test and result
 - 5.3. Execute Workflow test and result
6. Related Training Links
 - 6.1. PowerToolz videos
 - 6.2. PowerToolz training
 - 6.3. PowerToolz user guide
 - 6.4. PowerToolz Contact Information

Installing PowerToolz

Prerequisites

- ☐ The tool can be installed on a computer having access to K2 Database and K2 server.
- ☐ The user should have Administrator permissions to the K2 Server.
- ☐ PowerToolz is currently compatible with Windows 7/8/8.1/10 Windows Server 2008, 2008 R2, 2012 SP1 and 2012 R2 systems.
- ☐ .Net Framework 4.5.2 or later is required on the computer where user wants to install PowerToolz.
- ☐ Visual Studio AddIns support for VS2010, VS2012 and VS2013 and it also need .NET framework 4.5.2 or later.
- ☐ The current version of PowerToolz is v5.2 and provides support for K2 BlackPearl 4.6 onwards.

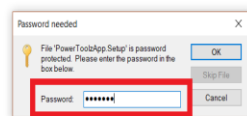
Licensing

- ☐ Each user must have jEyLaBs license Key for PowerToolz.
- ☐ Licenses are distributed on a per-user-per-environment basis.
- ☐ The license key will be generated by jEyLaBs software based on the Product key and required features of PowerToolz.

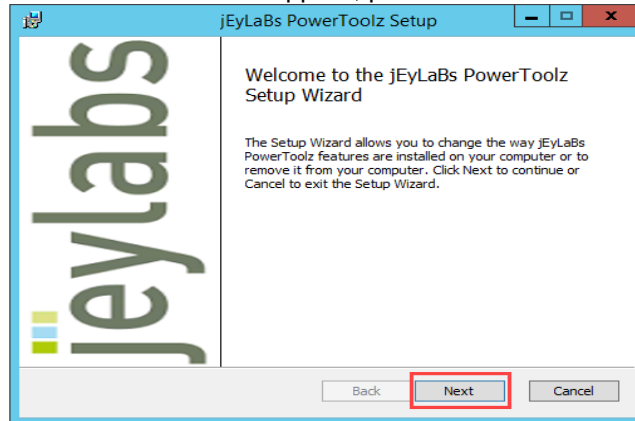
Step By Step Guide

1. You will be provided a download link to the PowerToolz installation file by jEyLaBs as part of the Evaluation or Purchase procedure. Once you have downloaded the ZIP file it can be extracted using the password '**jeylabs**', upon which the executable file can be executed.

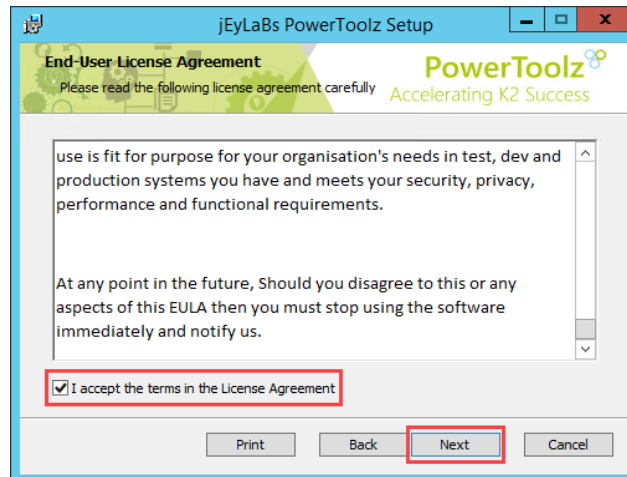
Name	Type	Compressed size	Password p.	Size	Ratio	Date modified
PowerToolzApp.Setup	Windows Installer Package	24,532 KB	Yes	25,504 KB	4%	5/10/2019 2:57 PM



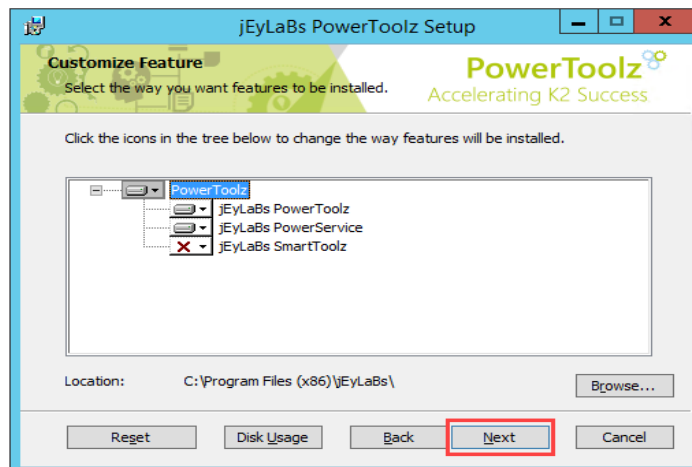
- The installation home screen will appear, press the **Next button** to move to the next step.



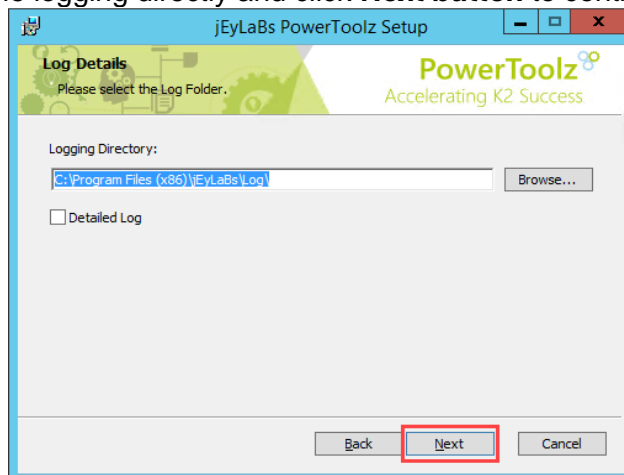
- The EULA page will be displayed. Accept the license agreement and press the **Next button** to continue to the next step



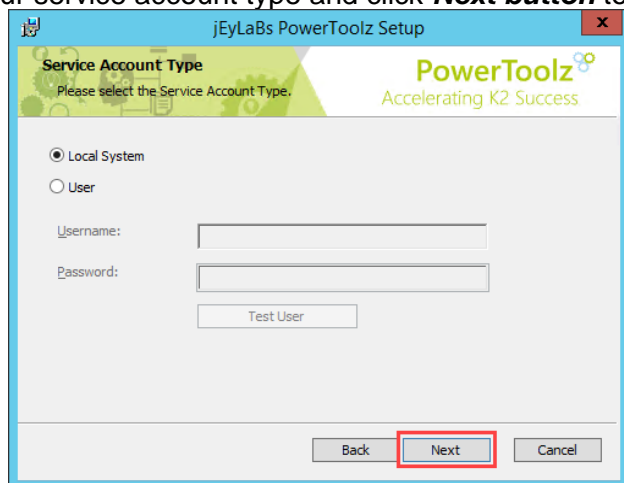
- Recommended default features be already selected if you wish to change the features installed you may do so in this wizard. Once configured click **Next button** to continue.



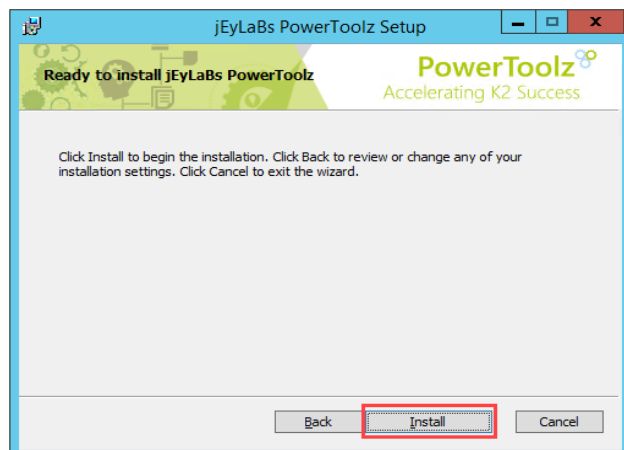
5. Browse the logging directly and click **Next button** to continue.



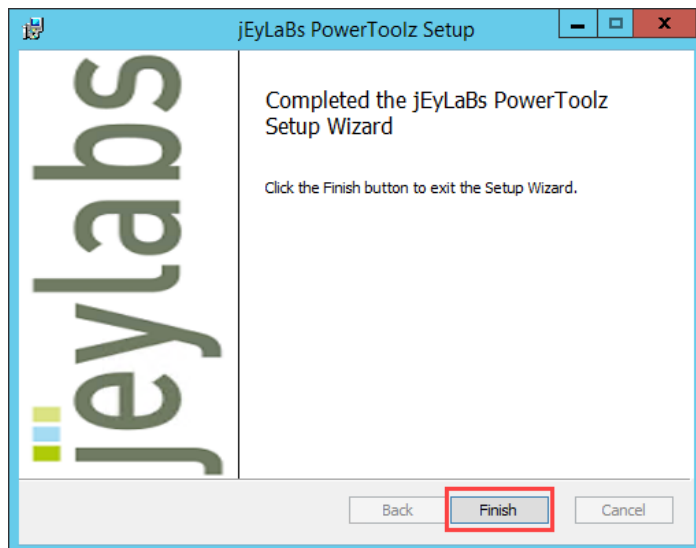
6. Select your service account type and click **Next button** to continue.



7. You are now ready to begin the installation! Press the **Install button** to initiate the install process



- Once the installation is complete the Install Completed page. Click the **Finish button** to finalize and close the PowerToolz installation.

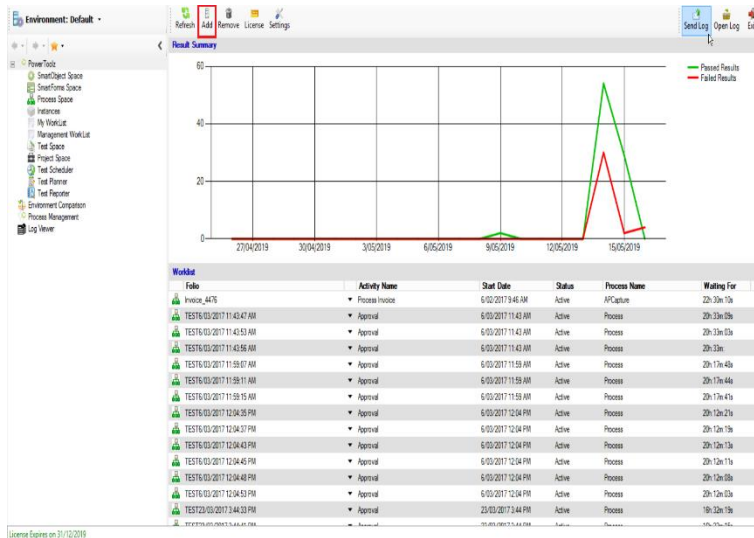


- You have now completed the installation and are ready to immerse yourself in the PowerToolz experience! Click on the **PowerToolz shortcut** on your desktop to open the application.



Connecting to a K2 environment

- From the PowerToolz home screen you can initiate the K2 environment setup process by clicking the **Add** button.




- The license agreement page will be displayed. Tick the **agreement checkbox** and then click the **Next button** to proceed to the next step.

The screenshot shows the 'jeylabs PowerToolz Environment Setup' window. It displays the 'END USER LICENSE AGREEMENT' (EULA) text. At the bottom, there is a checkbox labeled 'I accept the terms of the Licence Agreement' which is currently unchecked. To the right of the checkbox is a red box highlighting the 'Next' button. Other buttons visible are 'Close' and 'Previous'.

- Enter Host Server, Host Server Port, Workflow Server Port and SmartForm Runtime URL (Can be configured after environment has been added). Click the **Test Connection button** to get the message of **Server connection success...** you can enter an environment name, click the **Next button** to continue.

4. Provide the relevant company details and select the required features to be installed. This information is used to generate the license key, click the **Next button** to continue.

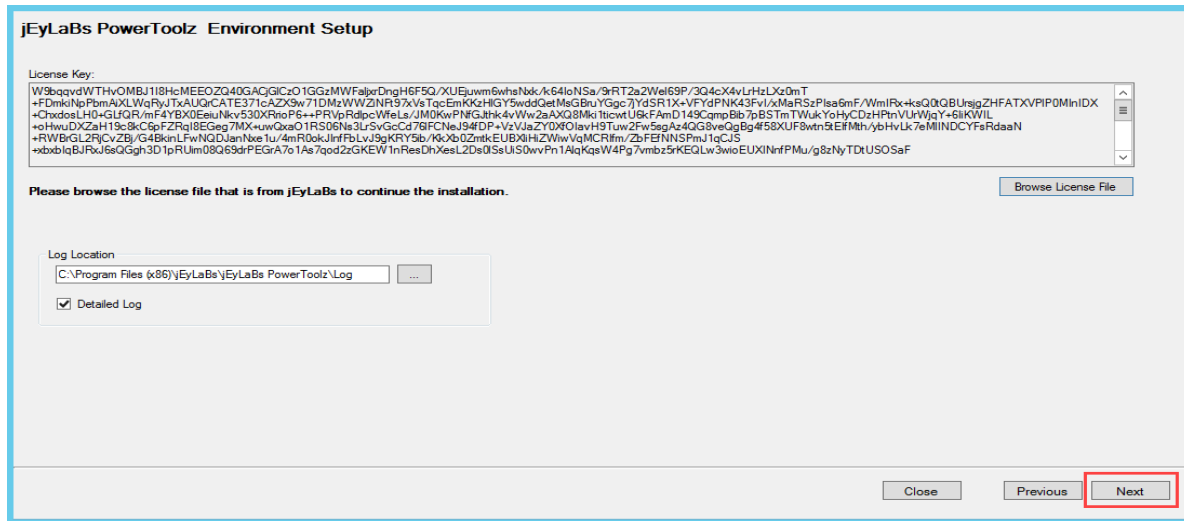
5. You will be presented with a Product Key. Click **Copy to Clipboard** and send the product key in an **e-mail to powertoolz@jevlabs.com.au**. You will receive a response with your license key that has been generated using the product key you have provided. Once you have received this information you can click the **Next button** to continue.

Product Key: 

PowerToolz Jeylabs Jeylabs.lc

Please locate the product key file and send it to powertoolz@jeylabs.com.au

- The next screen will require the input of a license key to install PowerToolz. Browse the license Key file sent by Jeylabs and once selected it will be inputted in the text box automatically. After product key has been selected click the **Next button** to continue



jEylabs PowerToolz Environment Setup

License Key:
 W9bqqvdWThyOMBj118HcMEEQZQ40GAGGICzO1GGzMWfajrDngH6F5Q/XUEjwm6whsNbkA64loNSa/9RT2a2Wel69P/3Q4cX4vLrHzLX20mT
 +FDmkiNpPbmAxlWqRyJTxAUQrCATE371cAZX9w71DMzWWZINR97xV6TqcEmKKzHIGY5wddQetMsGbuYgGc7YdSR1X+VFYdPNK43FvLxMaRSzPlea6mF/WmIRx+ksQkQ8UrsigZHFATXVPI0MiniDX
 +ChdoosLH0+GLQGR/mf4YBX0EeuNkv530XRoP6++PRVpRdpcWfeLs/JM0KwPnFGJthk4vWw2aAXQ8MdticwtUgkFamD149CmpBib7pB5TmTWukYoHyCDzHPnVUrWqY+6iKWiL
 +cHwuDXZaH15s9cCspFZRq8EGeg7MX+uwQxaO1RS56Hs3u5vGcCd7BFCNeJ94DP+VzVJaZYDQlavH9Tuw2Fw5agAz4Q8GveGgBg#58XUF8wtnt9EFMth/ybHvLk7eMIINDCYFaRdaaN
 +RWBGL2R6CvZB/G4BkmLFWnQJUnNks1u/4mR0skJlrfBjLvj3gKFRY5b/K6xb02ZmkEUB6HhZVwVqMcRim/ZuFEFNNSPm1IqCJS
 +xbxbIqBJRJsQggh3D1pRUlm08Q69drPEGrA7o1Aa7godZzGKEW1nResDhXesL2Ds0SeUIS0wvPn1AlqKqsW4Pg7vmbz5rKEQLw3wioEUXINrPMu/g8zNyTDtUS0SaF

Please browse the license file that is from jEylabs to continue the installation.

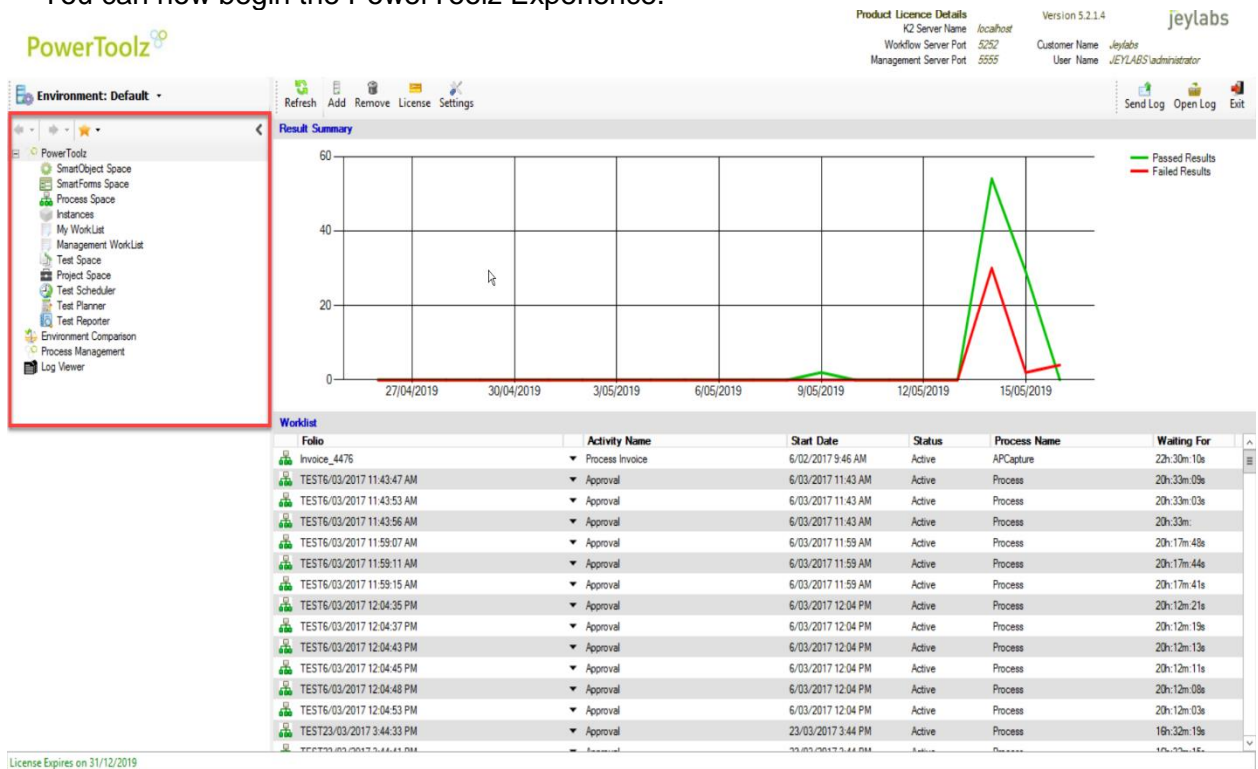
Browse License File

Log Location
 ...

☒ Detailed Log

Close Previous **Next**

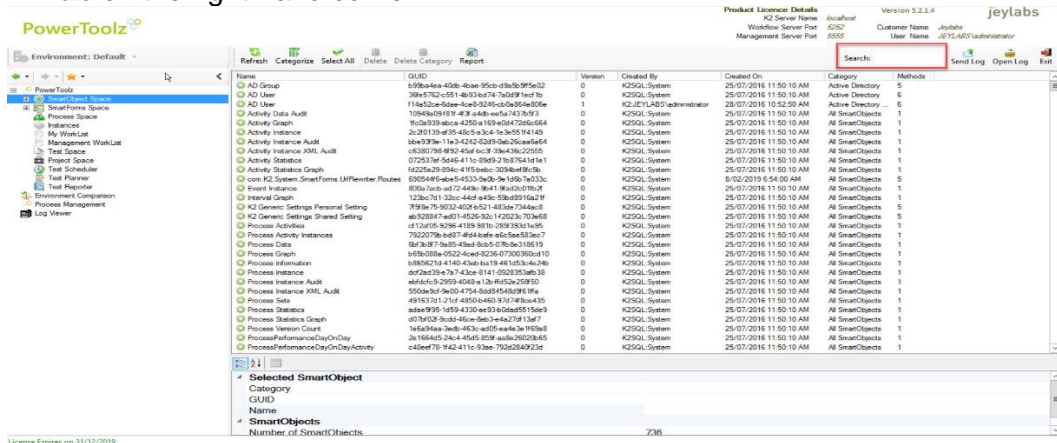
- A message confirming successful installation should appear on screen. Click **Finish** to close finalize the environment setup.
- The main PowerToolz Menu should now be available on the left-hand side of the main UI. You can now begin the PowerToolz Experience.



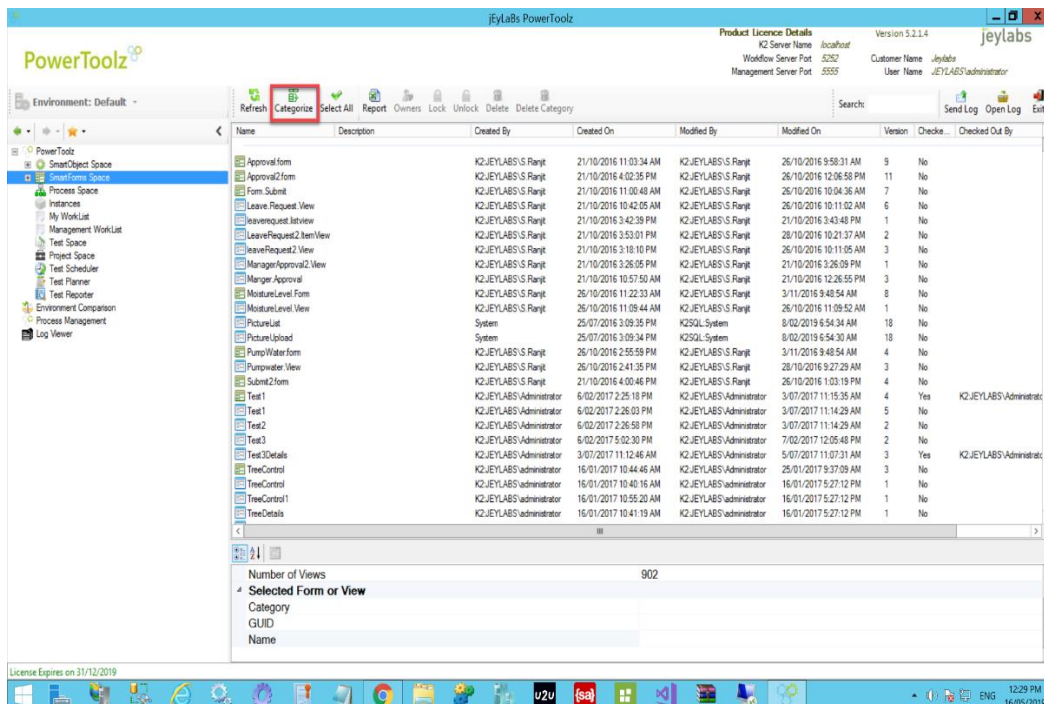
K2 environment exploration with PowerToolz

SmartObject:

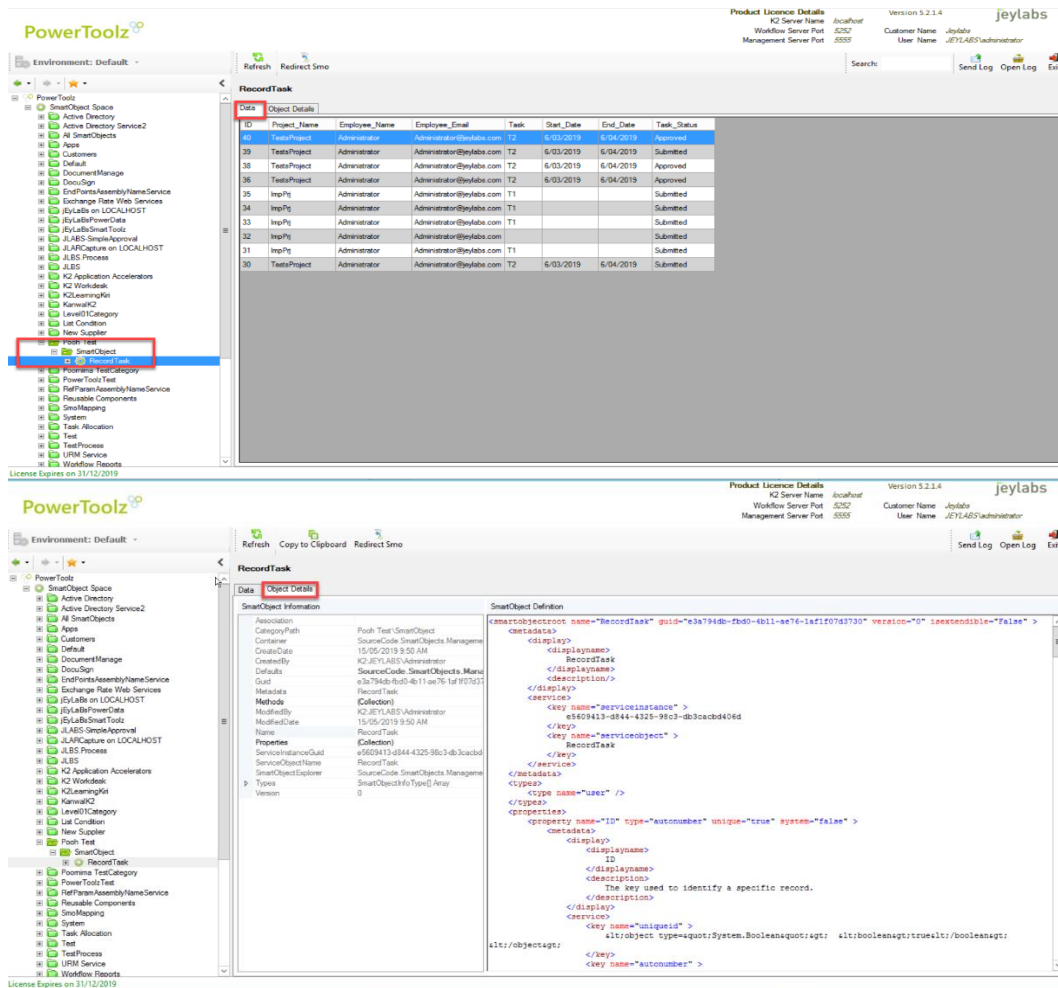
1. Looking to the main menu on the left-hand side, click on SmartObjects Space Node which lists all the smart objects deployed for the environment selected.
2. You can search for the smart objects containing the selective text entered on **Search Tab** on the right-hand corner.



3. Click on **Categorize** button to list the Smart Objects by K2 Category. Clicking Refresh Tab will list all the Smart Objects. These categories directly correlate to those listed in the K2 designer and SmartObject tester provided with K2

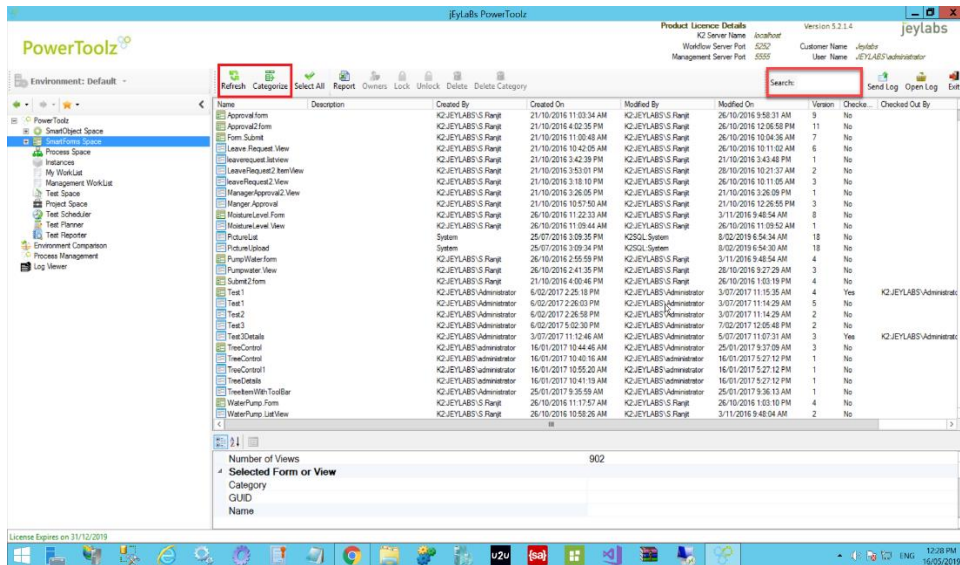


4. You can **double click** a SmartObject to view SmartBox's data and SmartObject details.
5. You can also select a SmartObject on the left-hand side menu by expanding the relevant category found under the SmartObject Space menu item.
6. Click on the **Object Details** tab to view the SmartObject definition in XML format.

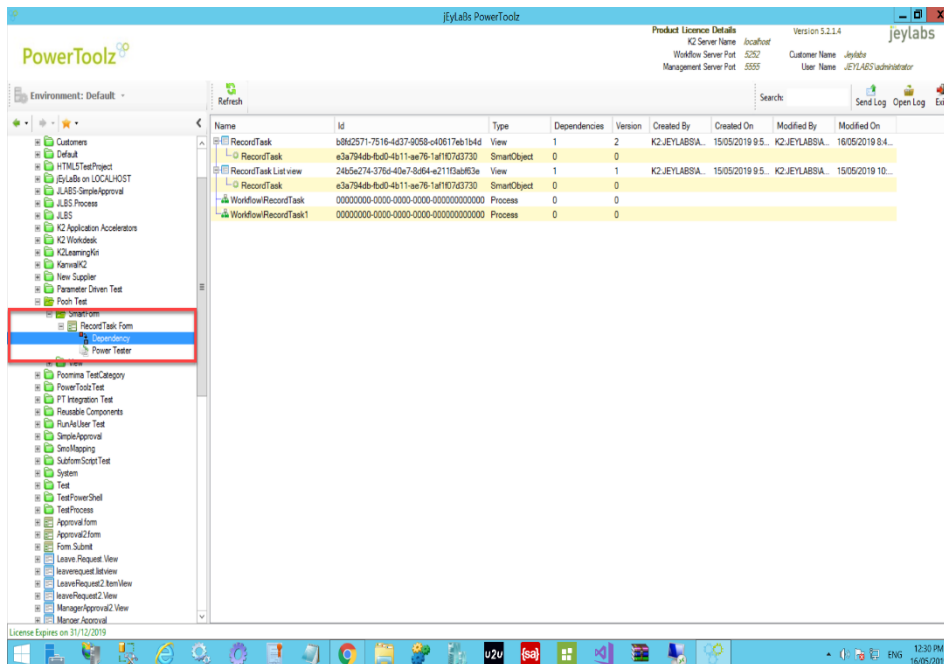


SmartForms:

1. You can also explore SmartForms and Views by selecting the SmartForms Space menu item.
2. As with the SmartObject space, SmartForms and Views can be **categorized** and filtered by keywords using the **search bar**. Views are represented as blue icons and SmartForms are represented by green.
3. You can **double click** on a View or SmartForm to see its **runtime**.

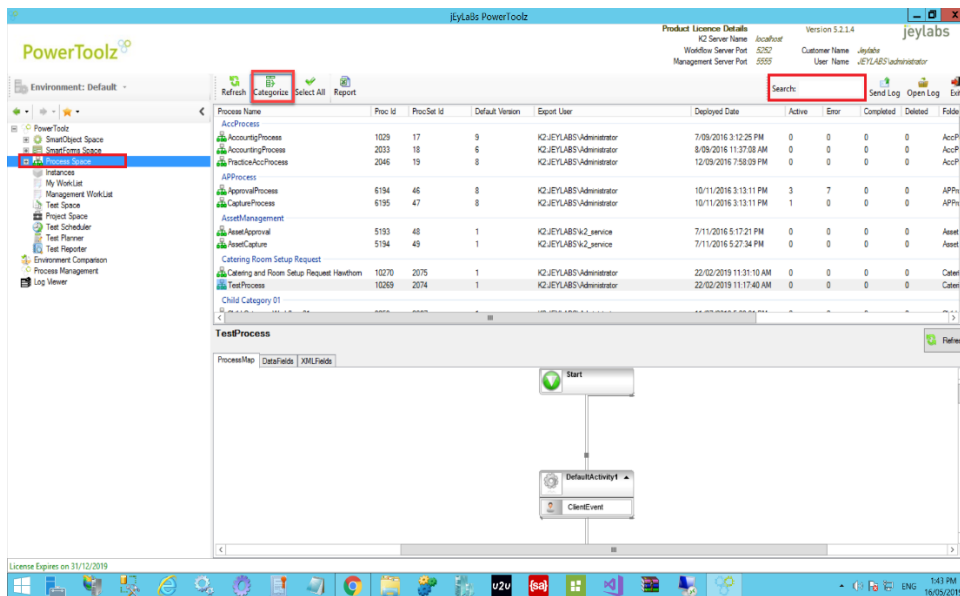


- Once you have selected a SmartForm, you can view its dependencies by double clicking on the **Dependency Explorer** menu item on the left-hand side. This will be located under the SmartForm you have selected. From this screen you can investigate the Views, SmartObjects and workflows associated with this SmartForm. This can be particularly useful when debugging a SmartForm and wish to see possible error sources.



Workflow (Process Space):

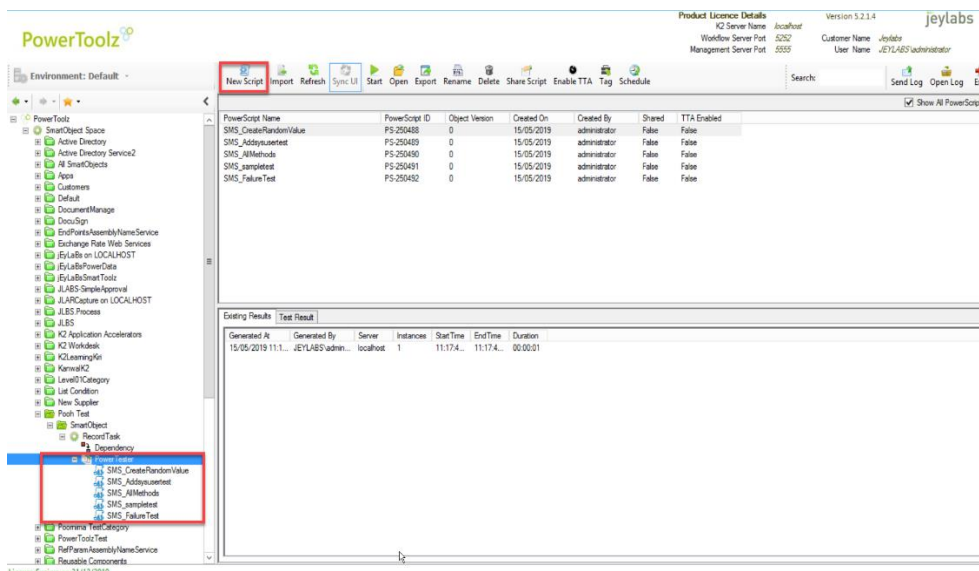
- You can also investigate processes (workflows) using the **Process Space**, found on the main menu. From here you can view, **categorize** and filter by keywords in the same way demonstrated using the SmartObject and SmartForm spaces. You can click on a process to see its **view flow** and **data fields**.



Creating your own test scripts

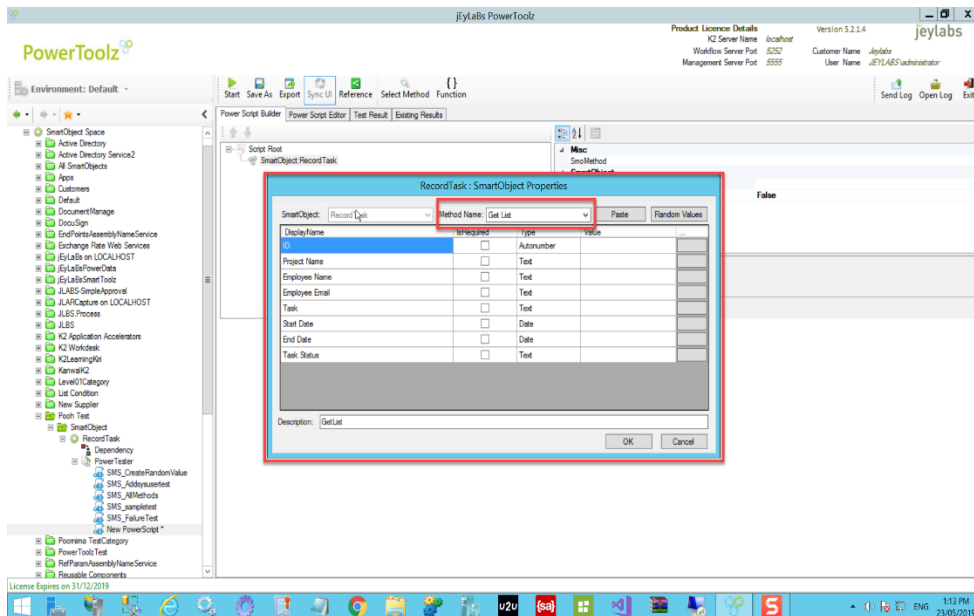
SmartObject Test Scripts

1. Moving back to the SmartObject space, select a smartobject you wish test with. Double clicking on the SmartObject will allow you to access its Power Tester. Click on the **Power Tester** to open the test space for this SmartObject. Click **New Script** to create a new test script.

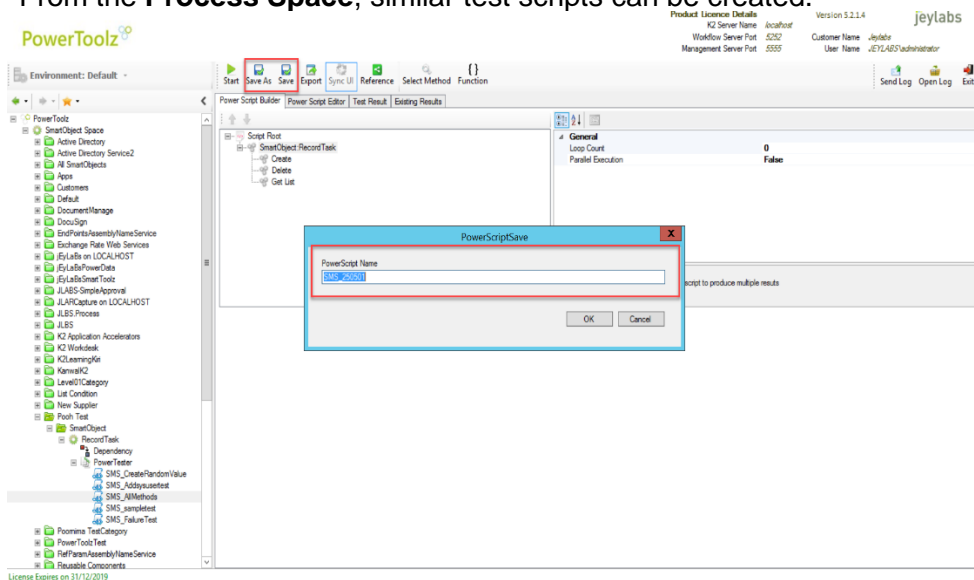


2. When you create a new test the add method screen will automatically be shown. You can choose any of the SmartObject's methods with create being the default one

selected. For the purposes of this tutorial select the **GetList** method. Press the **OK button** to save the method test.

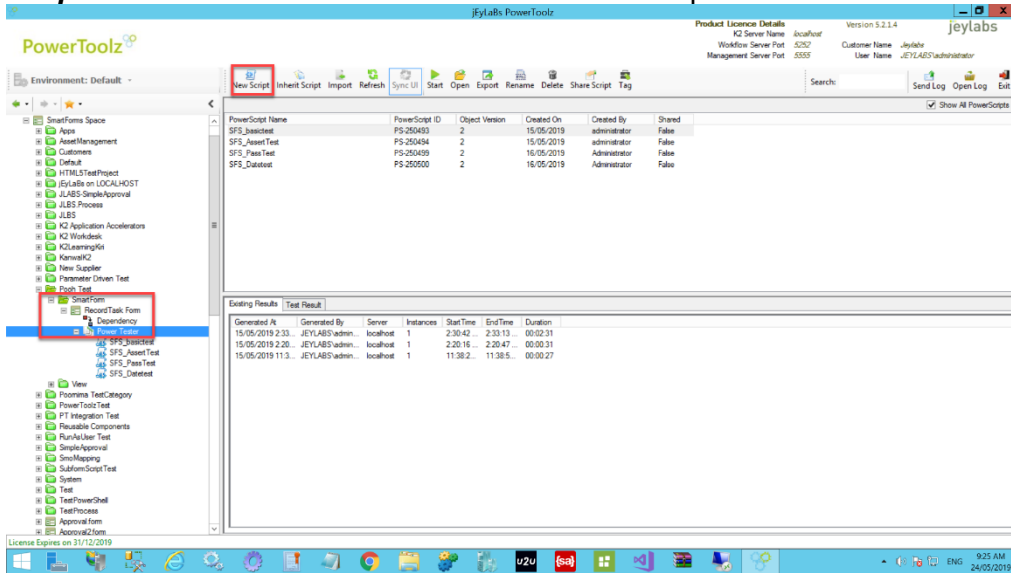


3. Press the **Save/Save As button** to save the script. Remember to give a meaningful name. Press the **OK button** and the script will be saved. You can view any saved test scripts by viewing **the Power Tester**. This test will be executed later in the tutorial. From the **Process Space**, similar test scripts can be created.

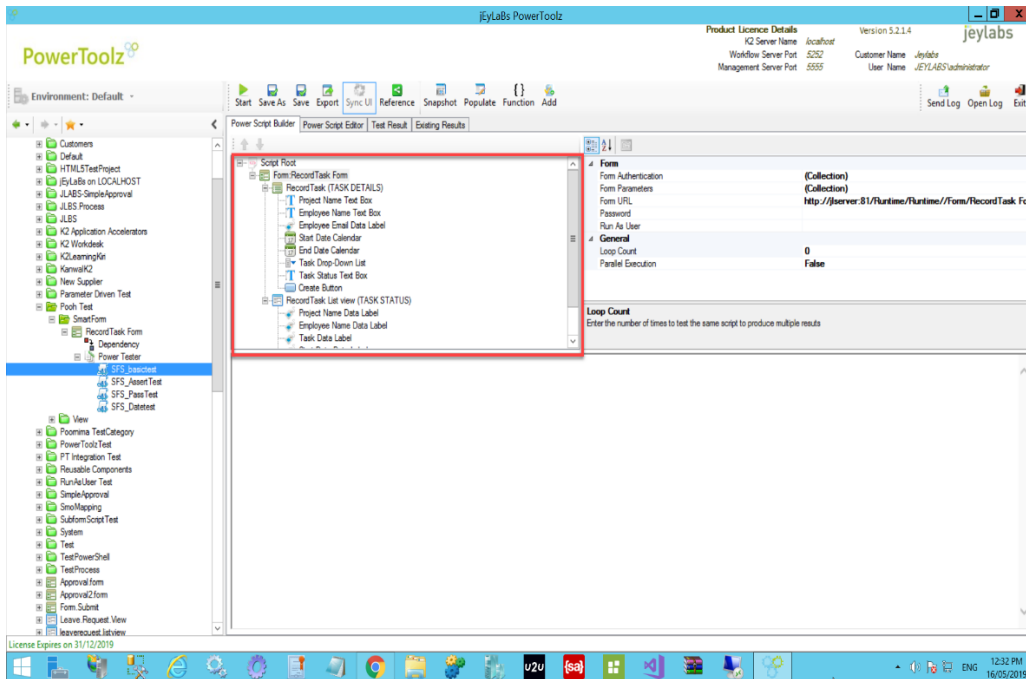


Form Test Scripts

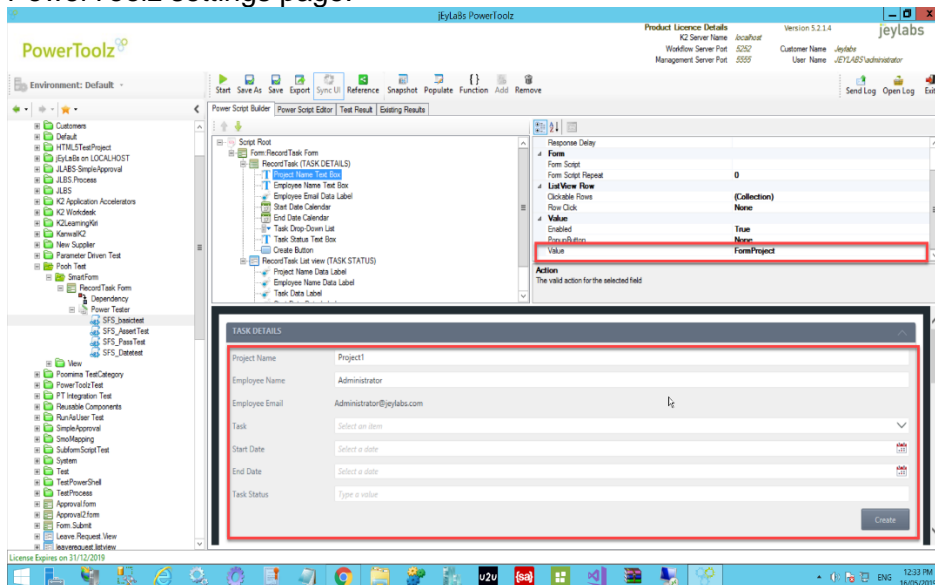
1. From the **SmartForm Space**, we can select a form to test by double clicking on the form name. On the left-hand side menu that is expanded the **Power Tester** can be accessed. Click on the **Power Tester** to view the scripts for this process. Click the **New Script** button on the toolbar to create a new test script.



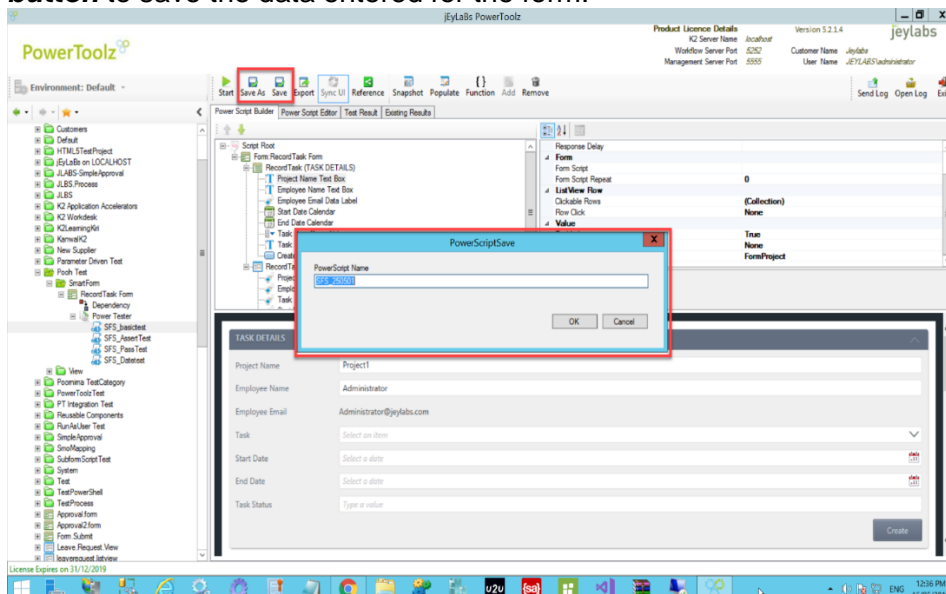
2. The Power Script builder will open. In the Power Script tree, the form and its views will be displayed, with their controls (such as text boxes and buttons) will be displayed in cascading form.



- There are two options for entering data as part of a SmartForm test. Each control can be selected, and the relevant test data can be entered into the 'value' attribute on the top right-hand side. Alternatively, test data can be entered into the form at the bottom half of the PowerToolz window, using the form runtime. If the runtime of the form cannot be seen this will be due to incorrect SmartForm runtime settings found within the PowerToolz settings page.

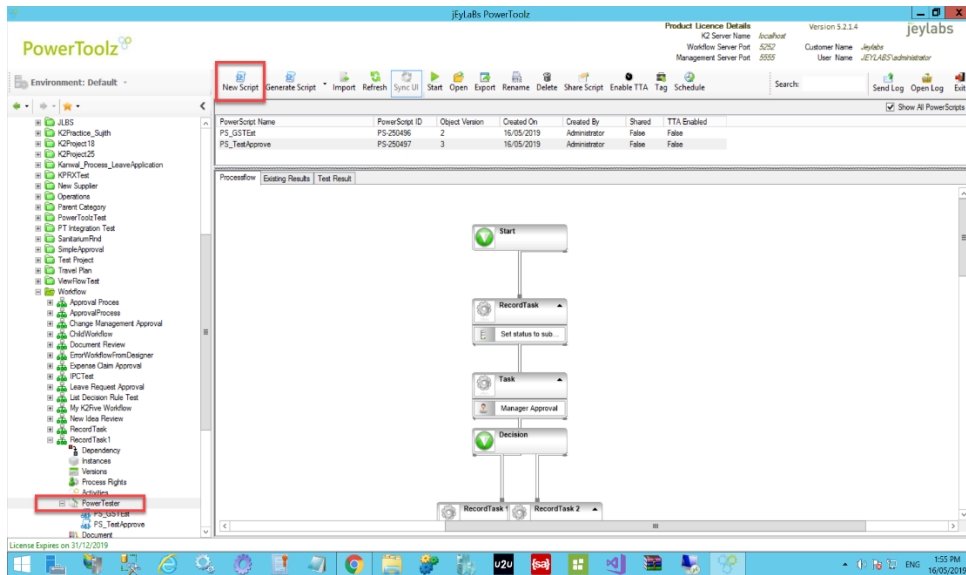


- Once data has been entered into the form using the Runtime view the **Snapshot** button can be used to record this data into the relevant controls for testing. Click **Save** button to save the data entered for the form.

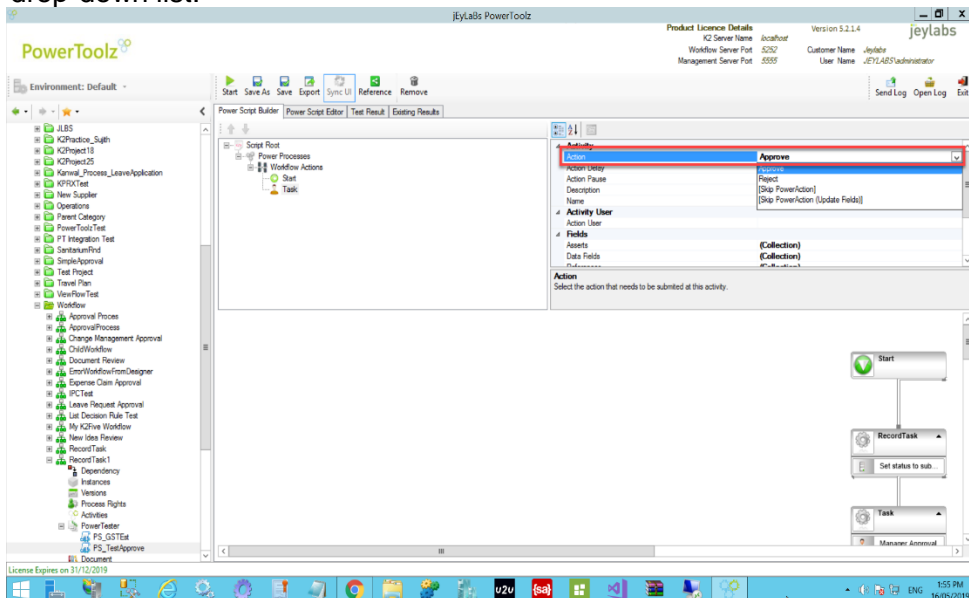


Workflow Test Scripts

1. From the **Process Space**, we can select a process to test by double clicking on the process name. On the left-hand side menu that is expanded the **Power Tester** can be accessed. Click on the **Power Tester** to view the scripts for this process. Click the **New Script** button on the toolbar to create a new test script.

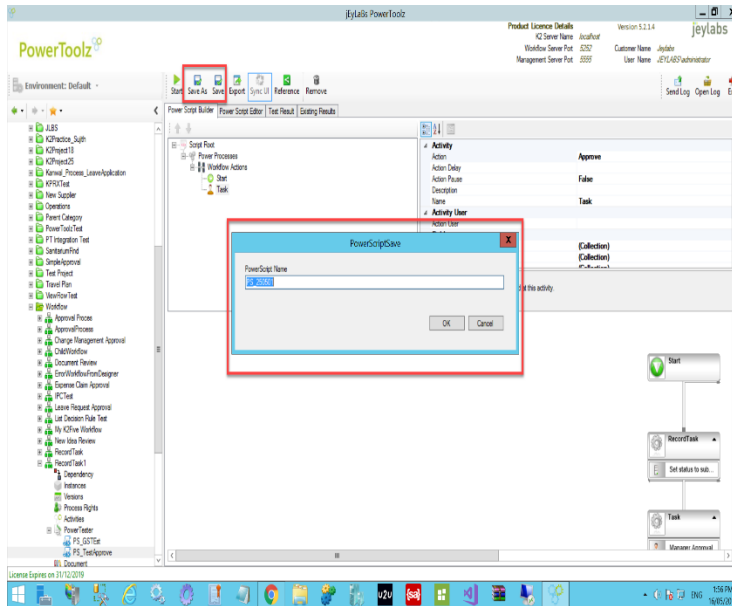


2. Configure the action property for the activities according to the scenario to be tested. For example, the action attribute could be set to approve or reject. Select the approval activity, looking to the right-hand side the action to be taken can be set, selecting from a drop-down list.



3. Press the **Save As** button to save the script. Remember to give a meaningful name. Press the **OK** button and the script will be saved. You can view any saved test scripts

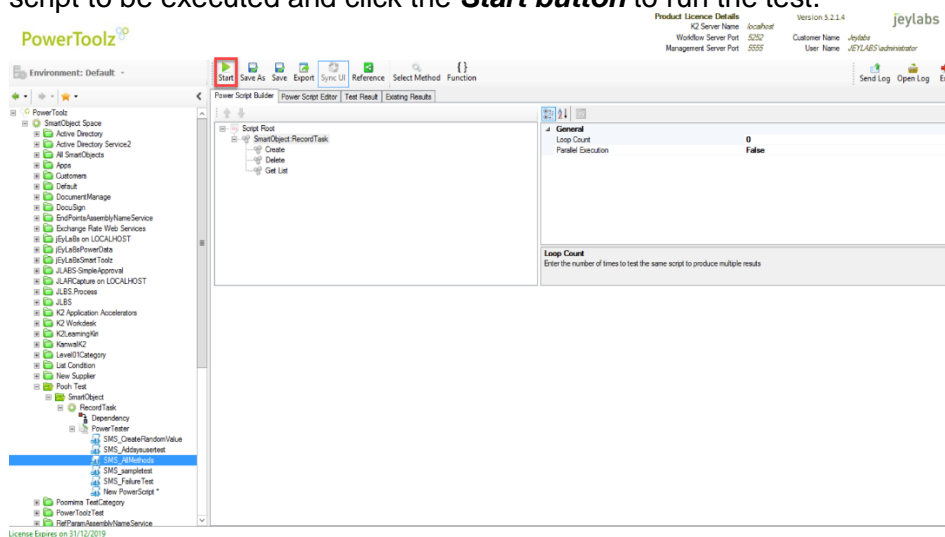
by viewing **the Power Tester**. This test will be executed later in the tutorial. From the **Process Space**, similar test scripts can be created.



Execute tests and verify results

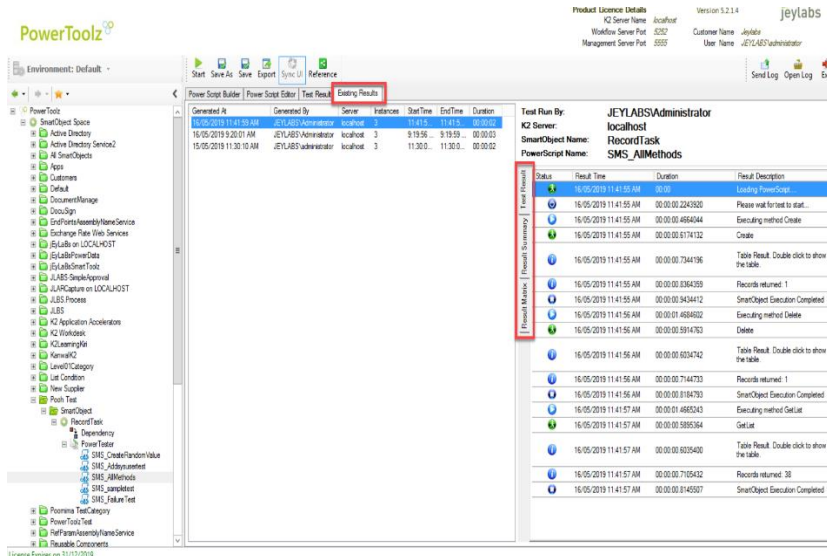
Execute SmartObject Test and Result

1. Returning to the **SmartObject Space**, click on the **Power Tester** of the SmartObject a test script was created for earlier, the test script can be executed. Click on the script to be executed and click the **Start button** to run the test.



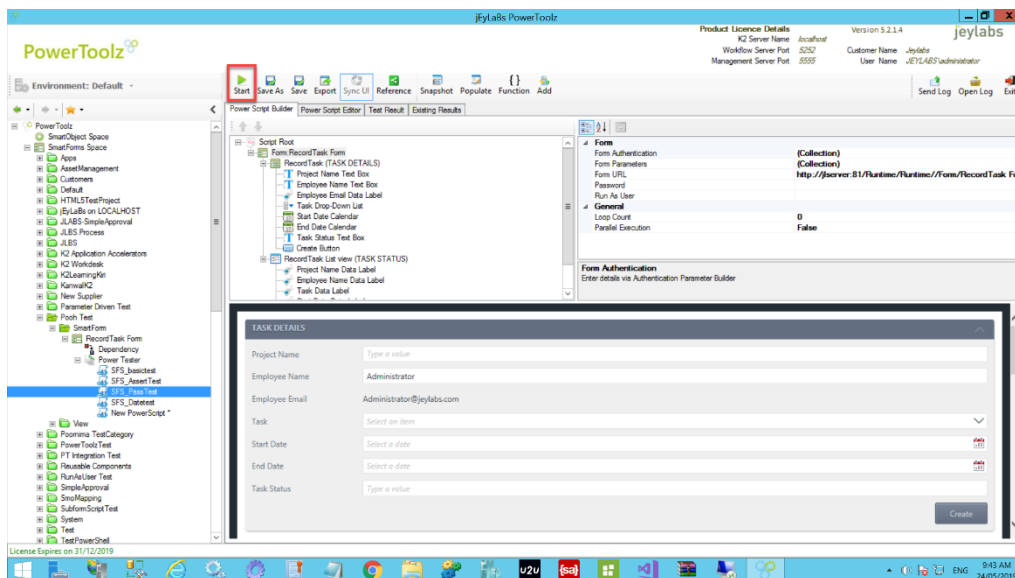
2. The test will be executed by **PowerToolz**. The results will be displayed at each step

of the test's executions. Once the test has been completed an overall test result will be displayed. You can view the test result as a historical test by accessing the **Existing Results tab**.

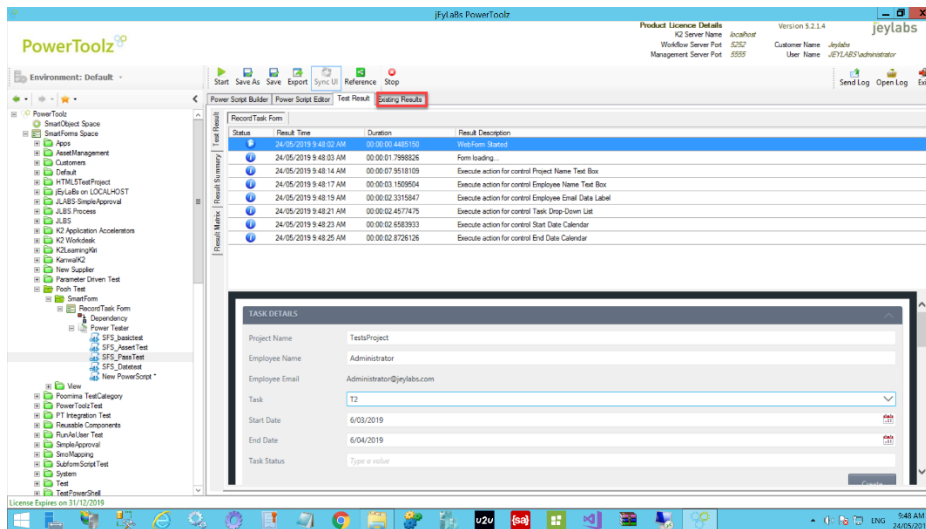


Execute SmartForms Test and Result

- Returning to the **SmartForm Space**, click on the **Power Tester** of the SmartForm for which a test script was created earlier, the test script can be executed. Click on the script to be executed and click the **Start button** to run the test.

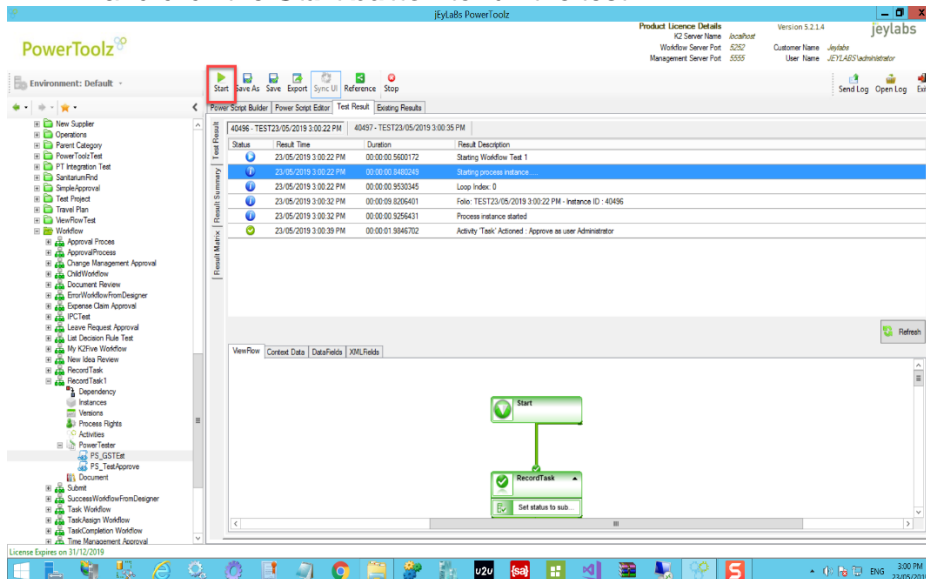


- The test will be executed by **PowerToolz**. The results will be displayed at each step of the test's executions. Once the test has been completed an overall test result will be displayed. You can view the test result as a historical test by accessing the **Existing Results tab**

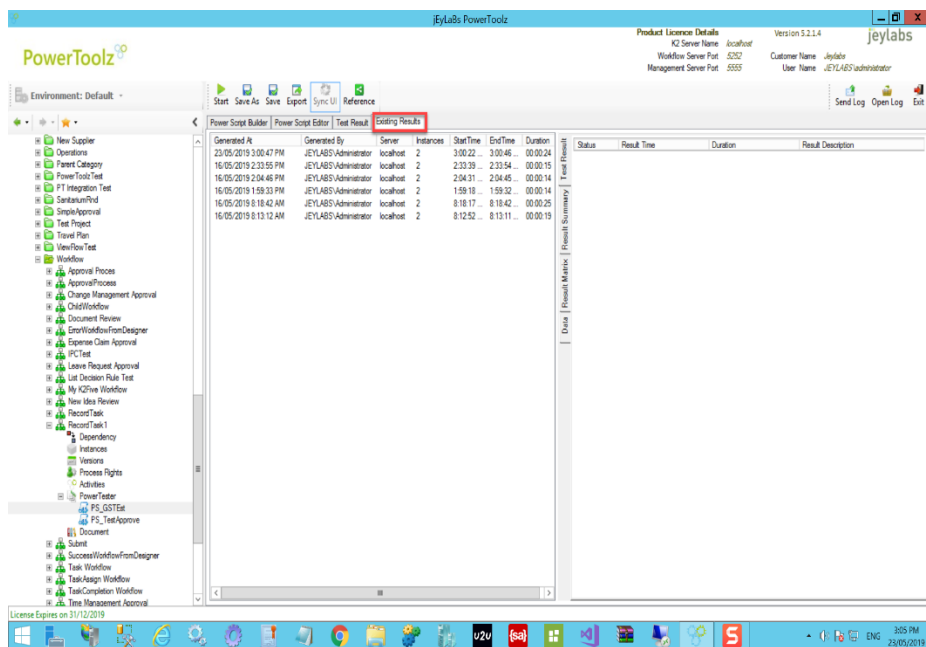


Execute Process Space Test and Result:

1. Returning to the **Process Space**, click on the **Power Tester** of the process a test script was created for earlier, the test script can be executed. Click on the script to be executed and click the **Start** button to run the test.



2. The test will be executed by **PowerToolz**. The results will be displayed at each step of the test's executions. Once the test has been completed an overall test result will be displayed. You can view the test result as a historical test by accessing the **Existing Results** tab.



Related Training Links

- ❑ **PowerToolz videos**
 - You can access the jEyLaBs YouTube channel for PowerToolz related video content.
 - <https://www.youtube.com/user/jeylabs>
- ❑ **PowerToolz training**
 - PowerToolz training can be delivered via online training and also onsite delivery on request. Training typically consists of a number of 1-2 hour sessions spread across 3-5 days.
- ❑ **PowerToolz user guide**
 - A PowerToolz user guide is available providing comprehensive information and guides for all of the features facilitated by PowerToolz.
- ❑ **PowerToolz contact information**
 - To find out more information about PowerToolz, request a personalised demo, or download a free evaluation visit www.powertoolz.com.au or contact us via email using powertoolz@jeylabs.com.au